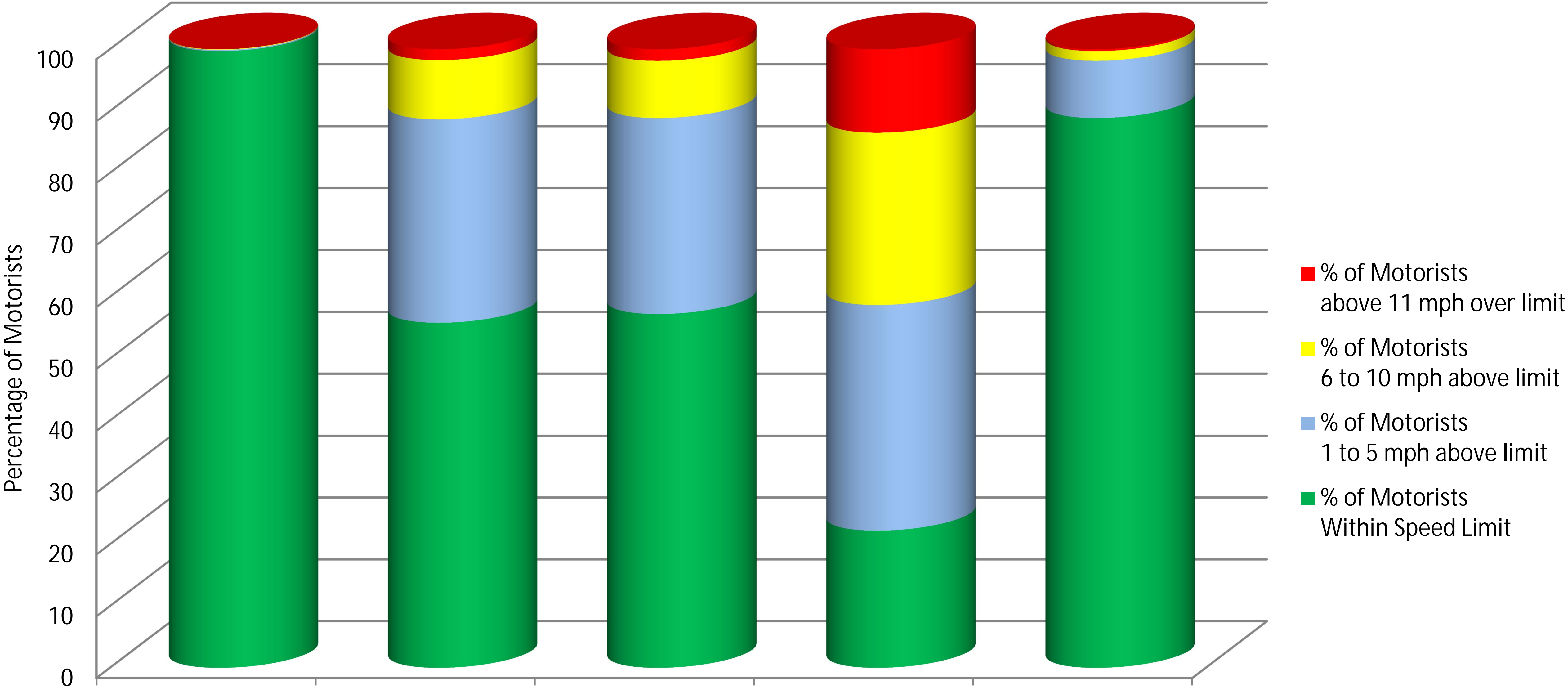


November 2012 24 hour Speed Summary



85th % tile speed
Posted Speed Limit

1
South of Cold
Water
33 mph
40 mph
(NB & SB)

2
800 ft South of
Norris Canyon
49 mph
40 mph (NB)
35 mph (SB)

3
100 ft South of
Norris Canyon
48 mph
40 mph (NB)
35 mph (SB)

4
100 ft North of
Norris Canyon
59 mph
50 mph (NB)
45 mph (SB)

5
100 ft South of
County Line
49 mph
45 mph
(NB & SB)